

275

TECHNOLOGY DRIVE



SOUTHPOINTE'S
FIRST **FULL-SCALE**
RENOVATION PROJECT!

CBRE

BUILDING INFORMATION

- ▶ **Total Building Size: 107,872 RSF**
- ▶ **Availability:**
 - First Floor:
Approximately 7,000 RSF – 54,000 RSF
 - Second Floor:
Approximately 17,000 RSF
- ▶ **Parking: 4/1,000 RSF**
- ▶ **±7,000 RSF first floor spec suite with furniture and direct entry – available 1/1/2021**
- ▶ **Loading dock**
- ▶ **Full building generator**
- ▶ **Situated at the highest point in the park, with unmatched views and visibility from I-79**

NEWEST TENANT:



inovalon

40,000 RSF ON 2ND FLOOR

275



BUILDING UPGRADES

- NEW ROOF
- NEW BUILDING MECHANICALS
- NEW BUILDING LOBBY AND COMMON AREAS
- NEW TENANT FITNESS CENTER
- NEW OUTDOOR AMENITY AREA WITH FREE WI-FI, SOFT SEATING AND SPORT COURT
- UPGRADED PARKING FIELD



➤ NEW BUILDING LOBBY AND COMMON AREAS

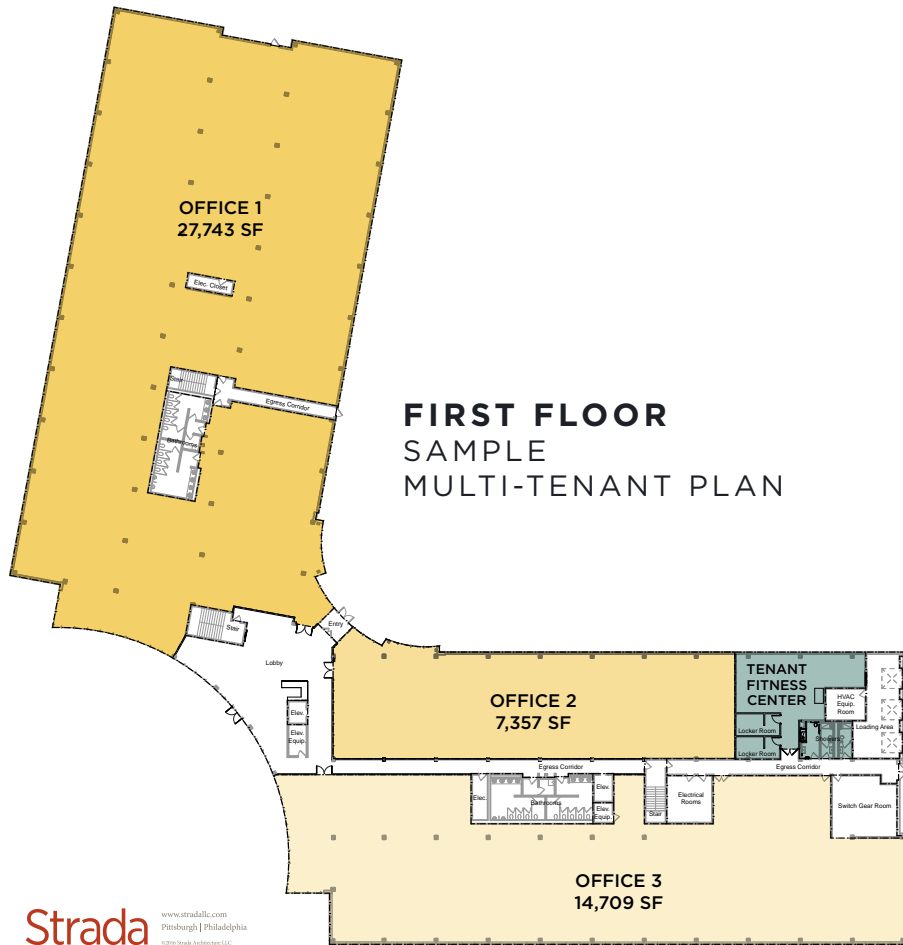


➤ NEW TENANT FITNESS CENTER



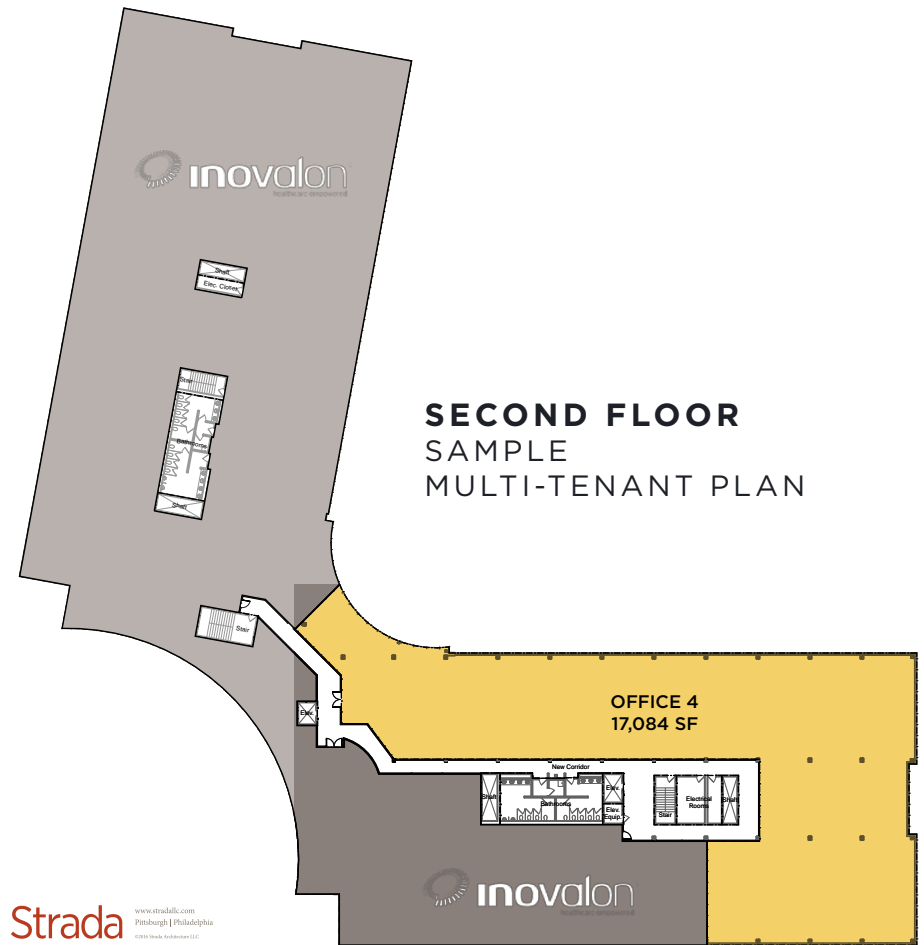
➤ COMMON AREAS FEATURE COLLABORATION SPACES AND ACCESS TO OUTDOOR PATIO

FLOOR PLANS



AVAILABILITY:

OFFICE 1: 27,743 SF OFFICE 2: 7,357 SF OFFICE 3: 14,709 SF



AVAILABILITY:

OFFICE 4: 17,084 SF

275

TECHNOLOGY DRIVE

CARMINE DILUCENTE

T 412 394 9828

carmine.dilucente@cbre.com

CBRE

M&JWILKOW

© 2021 CBRE, Inc. All rights reserved. This information has been obtained from sources believed reliable, but has not been verified for accuracy or completeness. Any projections, opinions, or estimates are subject to uncertainty. The information may not represent the current or future performance of the property. You and your advisors should conduct a careful, independent investigation of the property and verify all information. Any reliance on this information is solely at your own risk. CBRE and the CBRE logo are service marks of CBRE, Inc. and/or its affiliated or related companies in the United States and other countries. All other marks displayed on this document are the property of their respective owners. Photos herein are the property of their respective owners and use of these images without the express written consent of the owner is prohibited.



SOUTHPOINTE TOWN CENTER

Logos for businesses in Southpointe Town Center: Zoup!, JJ's, AC Hotels, barre3, Holiday Inn & Suites, Homewood Suites by Hilton, Crazy Mocha, Toscana, Chophouse, HLL STAR, and PNC.